

PUMP REPLACEMENT INSTRUCTIONS

For Simoniz S3200 Gas Pressure Washer (with Kohler SH265 Gas Engine)

Canadian Tire Product : 039-8056-0

Model Number: XG01

Tools and supplies required: M13 wrench (metric 13mm)

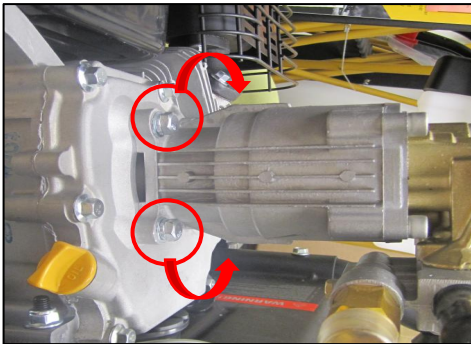
Part Number: [Click link to order: XG01-200-0000 Complete Pump Assembly](#), or see below contact details.

Difficulty Level (1-3): 1 (Easy)

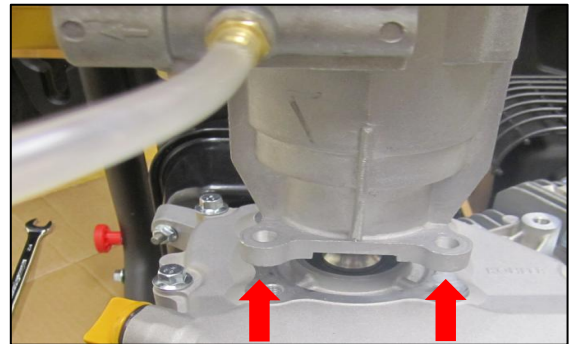


WARNING: BEFORE YOU START

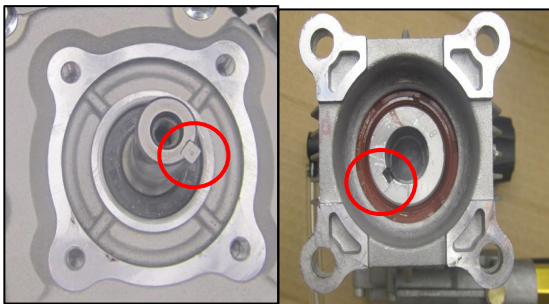
Accidental starts can cause serious injury or death. Before performing repair, make sure machine is OFF and disable engine by disconnecting spark plug wire. HOT PARTS CAN CAUSE SEVERE BURNS. DO NOT TOUCH ENGINE WHILE OPERATING, OR JUST AFTER STOPPING. Work on a LEVEL and FLAT surface.



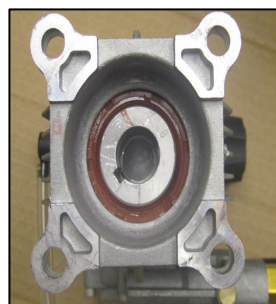
STEP 1: Using the M13 wrench, remove the 4 bolts that holds the pump assembly.



STEP 2: Firmly hold the pump with both hands and pull to slide the pump off the drive shaft.



STEP 3: When sliding the new pump on the drive shaft, align the pump hub keyway with the drive shaft keyway. Assemble the four bolts using the M13 wrench, **but do not tighten.**



STEP 4: IMPORTANT: Before tightening the bolts, rotate the engine by gently pulling on the starter cord once. Screw on the bolts in a star pattern to evenly distribute the stress. Tighten each bolt partially, then move to the next one. Continue in a star pattern until they are all tight.