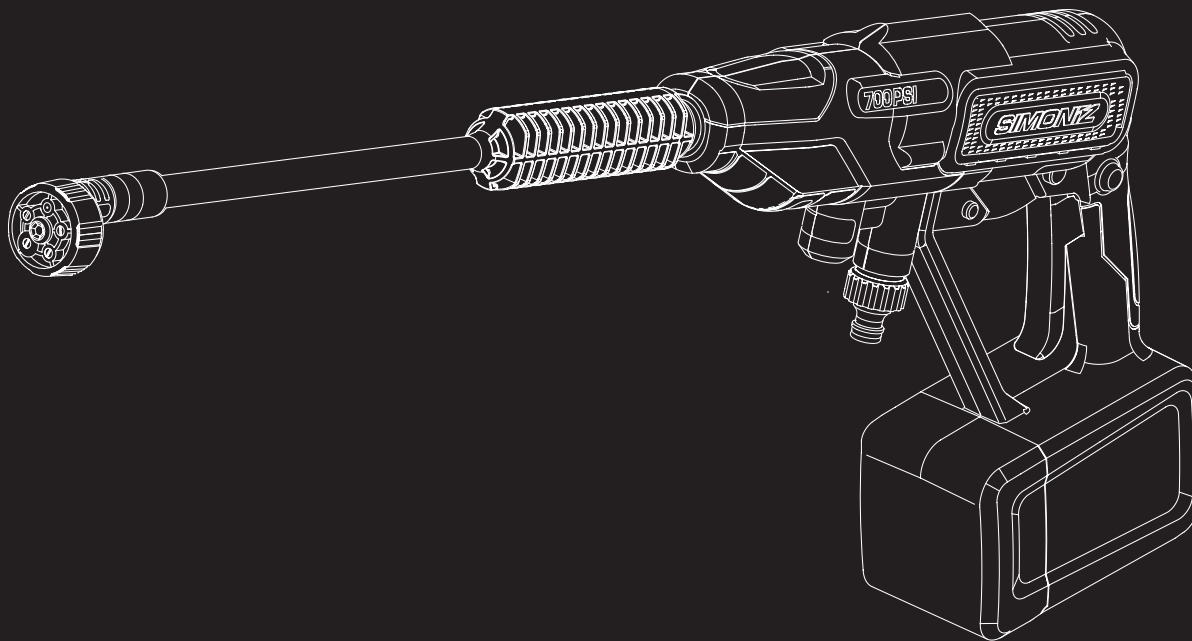




700 PSI CORDLESS PRESSURE WASHER

MODEL: XE45 / 039-8126-4

Use and Care Guide



Congratulations on the purchase of your new pressure washer. In order to ensure you have the best possible experience, please read through the following instructions. If you require any help, please contact the customer service department at:



1-866-474-6664

Contact us for assistance; we're here to help.

Version. 01

Table of content

1. IMPORTANT! Safety Instructions	3
2. General Safety	4
3. Electric Safety.....	5
4. Protection from Environmental Influences	5
5. Safety Symbols	6
6. Exploded View	7
7. Assembly Instructions.....	8
8. Operation.....	12
9. Rinsing with the Power Cleaner.....	13
10. Working with Foam Blaster	14
11. Shutting Down	15
12. Storage.....	15
13. Maintenance	15
14. Technical Specifications.....	15
15. Warranty	16

IMPORTANT! Safety Instructions

1. IMPORTANT! Safety Instructions

ALL OPERATORS MUST READ THESE INSTRUCTIONS BEFORE USE

1.1 Definitions

DANGER

Indicates a imminently hazardous situation, which, if not avoided, will result in death or serious injury.

WARNING

Indicates a potentially hazardous situation, which, if not avoided, could result in death or serious injury.

CAUTION

Indicates a hazardous situation, which, if not avoided, could result in minor or moderate injury.

2. General Safety

WARNING

This appliance is not intended for use by children or by unassisted, unsupervised persons whose physical, sensory or mental capabilities prevent them from using it safely. Children should be supervised to ensure that they do not play with the appliance. Before starting up your machine, please check it carefully for any defects. If you find any, do not start up your machine. Call our toll-free hotline 1-866-4SIMONIZ (1-866-474-6664).

WARNING

When using the power cleaner, basic safety precautions should always be followed to reduce the risk of fire, electric shock, and personal injury. These include:

- Know your product – Know how to stop the machine quickly. Thoroughly familiarize yourself with the controls.
- Keep bystanders away – All visitors and pets should be kept a safe distance away from the work area.
- Use the right product – Do not use this machine for any job except that for which it is intended.
- Dress properly – Do not wear loose clothing or jewellery. They can get caught in moving parts. Protective rubber gloves and non-slip footwear are recommended when working outdoors.

CAUTION

Exercise caution to avoid slipping or falling. Wear protective footwear that will protect your feet and improve your footing on slippery surfaces.

- Stay alert – Watch what you are doing. Use common sense. Do not operate the power cleaner when you are tired, or under the influence of alcohol or drugs.
- Do not overreach – Keep proper footing and balance at all times.
- Avoid unintentional starting – Do not carry a machine with power with your finger on the trigger. Make sure the switch is off before inserting the battery.
- Remove the battery – Remove the battery from the power cleaner when it is not in use, before servicing it, when changing accessories, and when performing any other maintenance task.
- Use safety glasses – Also use safety footwear, snug-fitting clothing, protective gloves, hearing and head protection.
- Check the water temperature – This power cleaner is not meant to pump hot water. NEVER connect it to a hot water supply as it will significantly reduce the life of the pump.
- Store indoors – NEVER store the power cleaner outdoors or where it could freeze. The pump could be seriously damaged.

General Safety

2. General Safety

WARNING

Do not use this appliance without reading this instruction manual.

WARNING

This appliance has been designed for use with cleaning agents that are recommended by the manufacturer. The use of other cleaning agents or chemicals may adversely affect the safety of the appliance.

WARNING

Do not use the appliance within range of persons unless they are wearing protective clothing.

WARNING

During cleaning, maintenance or when replacing parts, the machine must be disconnected from its power source by removing the battery.

WARNING

High-pressure jets can be dangerous if subject to misuse. The jet must not be directed at persons, pets, live electrical equipment, or the appliance itself.

- Do not direct the jet at yourself or others in order to clean clothes or footwear.
- Risk of explosion – Do not spray flammable liquids.
- Keep children away – This cordless power cleaner must not be used by children or untrained personnel. Close supervision is necessary when a product is used near children.
- To ensure appliance safety, use only original replacement parts from the manufacturer or those approved by the manufacturer.

WARNING

High-pressure hoses, fittings, and couplings are important for the safe operation of the appliance. Use only hoses, fittings, and couplings recommended by the manufacturer.

WARNING

Electrical Shock Hazard – Before starting your machine, please check it carefully for any defects. If you find any, do not start your machine and contact your distributor.

IMPORTANT

Do not connect the machine to a water supply which is turbid, muddy or corrosive. Not recommended for use with salt water—immediately rinse with fresh water for proper maintenance.

- Check for damaged parts – Do not use the appliance if any parts of the appliance are damaged.
- This cordless power cleaner must not be used at temperatures below 32°F (0°C).
- In the event of an accident or breakdown, switch off the machine immediately. If contact with detergent occurs rinse with an abundance of clean water.

Electric Safety / Protection from Environmental Influences

3. Electric Safety

WARNING

Read all safety warnings and instructions. Failure to follow the warnings and instructions may result in electric shock, fire and/or serious injury. Do not direct the jet at yourself or others in order to clean clothes or footwear.

1. Prevent unintentional starting. Ensure the switch is in the off-position before connecting with the battery pack, picking up or carrying the appliance. Carrying the appliance with your finger on the switch or energizing an appliance that has the switch on invites accidents.
2. Remove the battery pack from the appliance before making any adjustments, changing accessories, or storing appliance. Such preventive safety measures reduce the risk of starting the appliance accidentally.
3. Recharge only with the charger specified by the manufacturer. A charger that is suitable for one type of battery pack may create a risk of fire when used with another battery pack.
4. Use appliances only with specifically designated battery packs. Use of any other battery packs may create a risk of injury and fire.
5. When the battery pack is not in use, keep them away from other metal objects, like paper clips, coins, keys, nails, screws or other small metal objects, that can make a connection from one terminal to another. Shorting the battery terminals together may cause burns or a fire.
6. Under abusive conditions, liquid may be ejected from the battery; avoid contact. If contact accidentally occurs, flush with water. If liquid contacts eyes, additionally seek medical help. Liquid ejected from the battery may cause irritation or burns.
7. Do not use a battery pack or appliance that is damaged or modified. Damaged or modified batteries may exhibit unpredictable behavior resulting in fire, explosion or risk of injury.

8. Do not expose a battery pack or appliance to fire or excessive temperature. Exposure to fire or temperature above 265°F (130°C) may cause explosion.
9. Follow all charging instructions and do not charge the battery pack or appliance outside of the temperature range specified in the instructions. Charging improperly or at temperatures outside of the specified range may damage the battery and increase the risk of fire.
10. Have servicing performed by a qualified repair person using only identical replacement parts. This will ensure that the safety of the product is maintained.
11. Do not modify or attempt to repair the appliance or the battery pack (as applicable) except as indicated in the instructions for use and care.











4. Protection from Environmental Influences

1. Wear suitable work clothes. Wear safety goggles.
2. Protect your cordless tool and the battery charger from moisture and rain. Moisture and rain can cause dangerous cell damage.
3. Do not use the cordless tool with flammable liquids.
4. Use the cordless tools only in dry conditions and at an ambient temperature of 39.2 – 104°F (4 – 40°C).
5. Protect batteries from overheating. Overloads, overcharging and exposure to direct sunlight will result in overheating and cell damage. Never charge or work with batteries that have been overheated. Replace them immediately, if possible.
6. Store your cordless tool only in dry locations with an ambient temperature of 39.2 – 104°F (4 – 40°C).

Safety Symbols

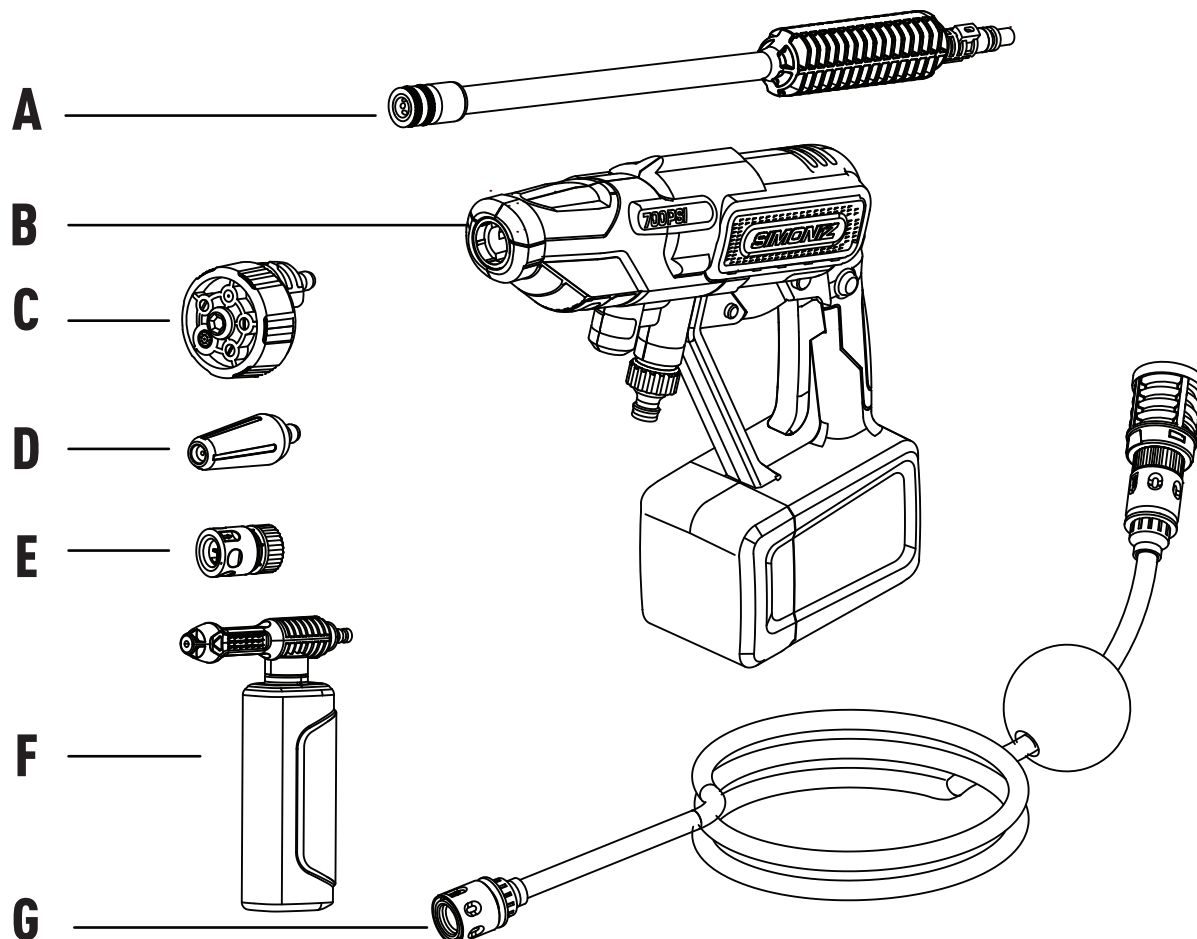
5. Safety Symbols

The following table depicts and describes safety symbols that may appear on this product. Read, understand, and follow all instructions on the machine before attempting to assemble and operate.

Symbols	Descriptions	Symbols	Descriptions
	READ THE OPERATOR'S MANUAL(S) – Read, understand, and follow all instructions in the user manual(s) before attempting to assemble and operate.		SAFETY ALERT – Indicates a precaution, a warning, or a danger.
	WARNING! Do not expose the unit to rain or wet conditions. Keep dry.		WEAR EYE AND HEARING PROTECTION – For protection against injury, wear ear defenders and safety goggles.
	To reduce the risk of injury, user must keep all bystanders at least 50' (15 m) away.		Ensure the faucet is protected from back flow.
	Wear safety gloves during use to protect hands.		Wear non-slip footwear that will protect your feet and improve your footing on slippery surfaces.
	Store indoors. Never store the power cleaner outdoors. If the pump freezes, permanent damage may result.		Indoor use only. Only use battery charger indoors.

Exploded View

6. Exploded View



Parts List

Item #	Part Name	Qty.	Part #
A	QC Wand	1	XE45-030-0001
B	Handheld pressure washer	1	XE45-000-1000
C	5-in-1 dial	1	XE45-030-0002
D	Turbo nozzle	1	XE45-030-0003
E	Inlet adaptor	1	XE45-030-0004
F	Foam blaster	1	XE45-060-0000

Item #	Part Name	Qty.	Part #
G	Garden hose set	1	XE45-050-0000
N/A	Cleaning Needle	1	Pre-attached on the manual

Assembly Instructions

7. Assembly Instructions

7.1 Power Cleaner

1. Carefully remove the power cleaner bundle and check to see that all of the above items are supplied.
2. Inspect the product carefully to make sure no breakage or damage occurred during shipping. If you find damaged or missing parts, call our toll-free hotline 1-866-4SIMONIZ (1-866-474-6664).

NOTE: Do not discard the shipping carton and packaging material until you are ready to use your new cordless power cleaner bundle. The packaging is made of recyclable materials. Properly dispose of these materials in accordance with local regulations.

IMPORTANT! The equipment and packaging material are not toys. Do not let children play with plastic bags, foils, or small parts. These items can be swallowed and pose a suffocation risk!

WARNING

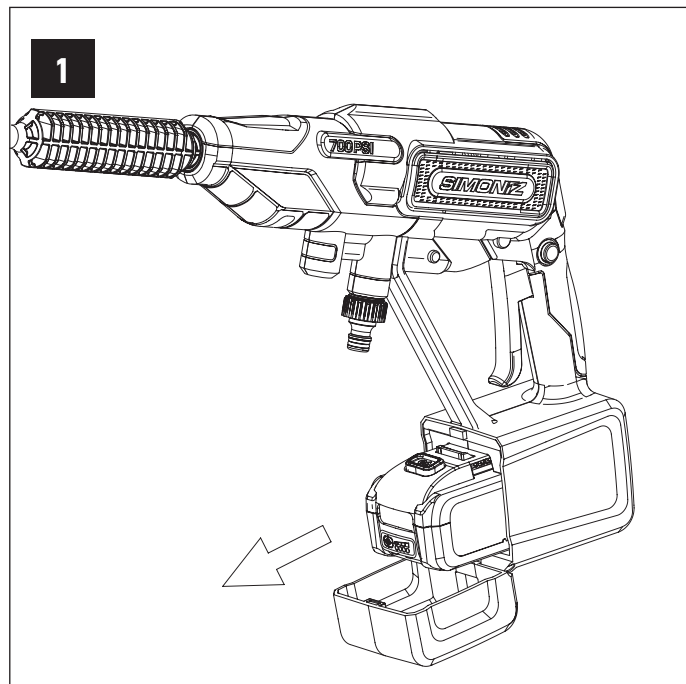
Do not insert the battery until assembly is complete. Failure to comply could result in accidental starting and possible serious personal injury.

CAUTION

FIRE HAZARD. When disconnecting the charger from the battery, be sure to unplug the charger from the outlet first, then disconnect the charger from the battery.

7.2 Charging the Battery

1. Open the battery compartment cover, and push the push lock buttons on the battery to pull the battery pack out from the battery compartment (Fig. 1).



Compatible Battery Packs and Chargers

Compatible Battery Packs

1. Battery pack manufacturer: Nanjing Chervon.
2. Battery type: Li-ion rechargeable battery, cULus listed.
3. Battery rating: 20 V DC
4. Battery pack models:
 - 2.0 Ah (5161.15, 054-7563-0)
 - 4.0 Ah (5161.16, 054-7564-8)
 - 5.0 Ah (5161.17, 054-7558-4)
 - 8.0 Ah (8729, 054-7569-8)

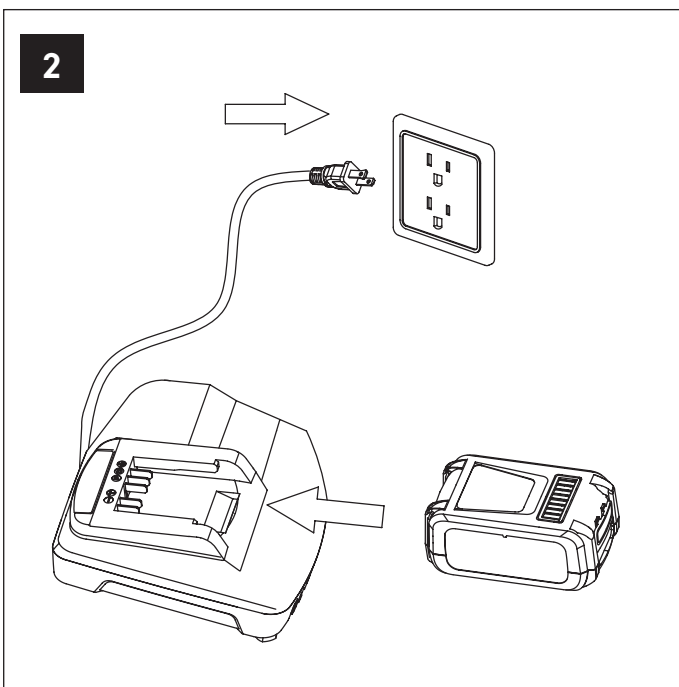
Compatible Battery Chargers

1. Battery charger manufacturer: Nanjing Chervon.
2. Battery charger certificate: cULus listed.
3. Battery rating
Input: 120 nV AC, 60 Hz, 45 W
Output: 20 V DC max
4. Battery charger models:
 - 5331
 - 5320.3, 054-3126-6
 - TD60CHD, 054-8299-4, 054-7567-2
 - 5317.6, 054-7565-6
 - 12001, 054-7571-0

Assembly Instructions

7. Assembly Instructions

2. Check that the mains voltage is the same as that marked on the rating plate of the battery charger. Then, plug the charger adaptor into an appropriate AC power outlet. Connect the charger plug into the charge socket of the battery to start charging (Fig. 2).



⚠ WARNING

Timely recharging of the battery will help prolong the battery's life. You must recharge the battery pack when you notice a drop in the equipment's power.

⚠ IMPORTANT

Never allow the battery pack to become fully discharged as this will cause irreversible damage to the battery.

7.3 Assembly

⚠ WARNING

To avoid serious personal injury, read and understand all safety instructions provided.

Do not insert battery until assembly is complete. Failure to comply could result in accidental starting and possible serious personal injury.

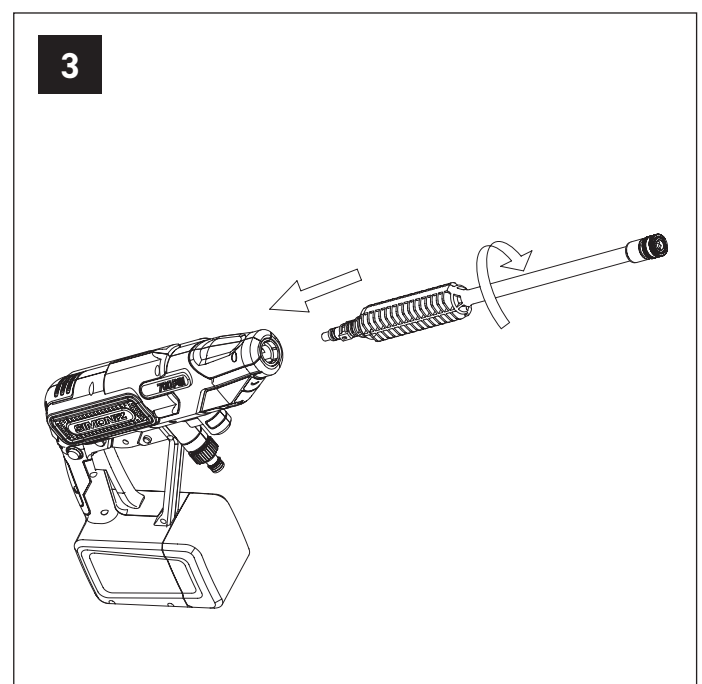
Before performing any maintenance, make sure battery is removed. Failure to heed this warning could result in serious personal injury.

To prevent serious personal injury, make sure the unit is powered off, and the battery is removed before attaching or detaching the wands.

1. Wand, Nozzle and Foam Blaster Assembly

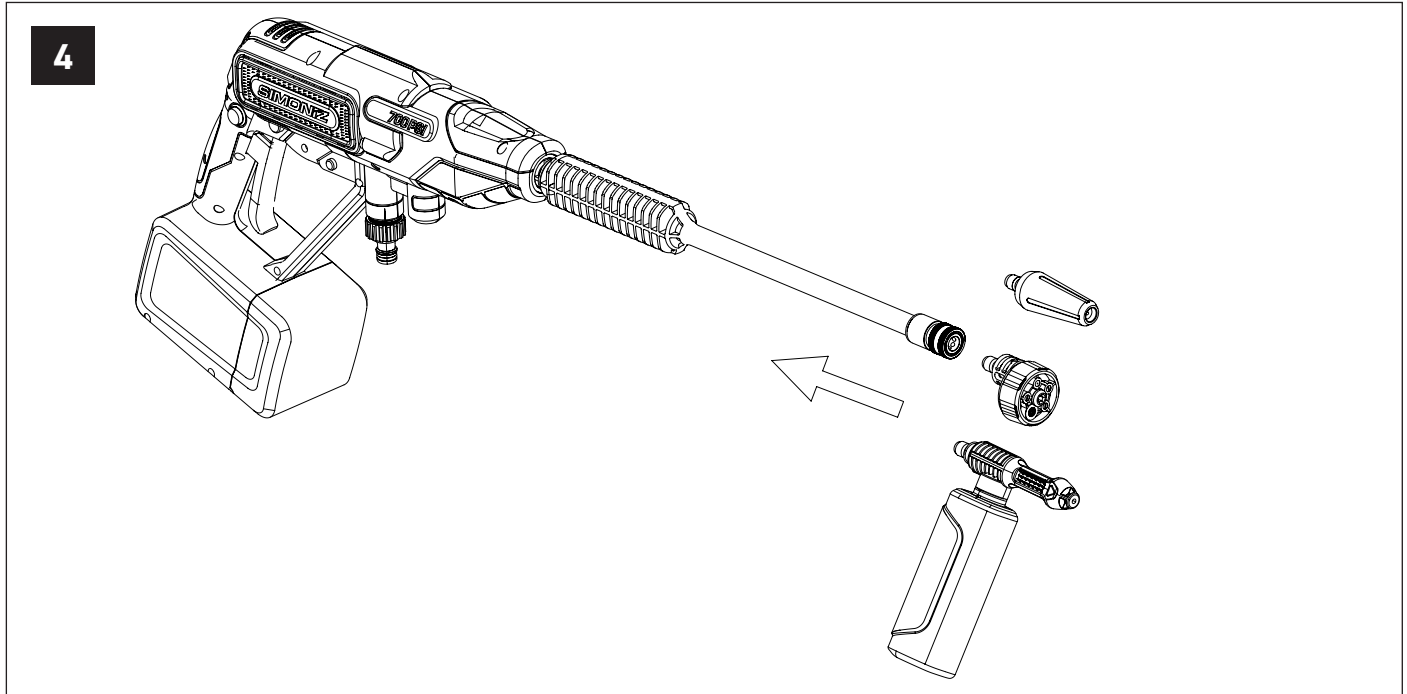
NOTE: The portable power cleaner is equipped with two wands: the spray wand and the extension wand. To connect the wands, follow the instruction below.

a) First, fit the spray wand into the gun firmly by aligning the two tabs on the wand with the grooves in the gun, then rotate the spray wand clockwise until the two parts are completely locked (Fig. 3).



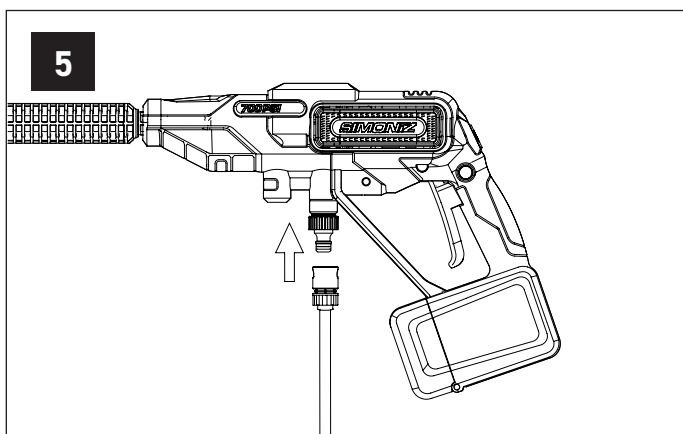
Assembly Instructions

b) Attach the desired nozzle or foam blaster to spray wand. Remove any previously attached nozzle by pulling the collar on the quick connect back, and pull the nozzle out (Fig. 4).



2. To Connect to Bucket/Fresh Water

a) To connect the equipped siphon hose to the power cleaner, pull down the collar of the quick connector and fit it onto the adaptor. Release the collar to lock the hose in place (Fig. 5).



NOTE: Make sure the hose is connected securely. Gently pull the hose connection to confirm it won't come off.

b) Drop the other end with the filter into a bucket of water or into fresh water. Adjust the floater's position up or down as needed to ensure the filter remains submerged below the surface of the water.

CAUTION

The power cleaner must only be used with clean (fresh) water; use of unfiltered water containing corrosive chemicals will damage the power cleaner.

WARNING

When connecting with fresh water (lake, spring, pond) make sure to use the equipped siphon hose. The siphon hose has a filter on the end, which will filter out dirt from fresh water sources.

WARNING

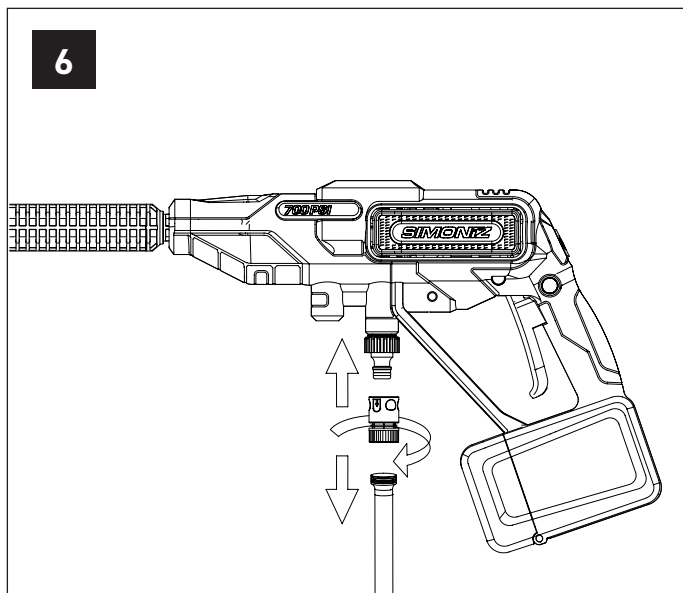
The intake water temperature must not exceed 104°F/40°C.

Assembly Instructions

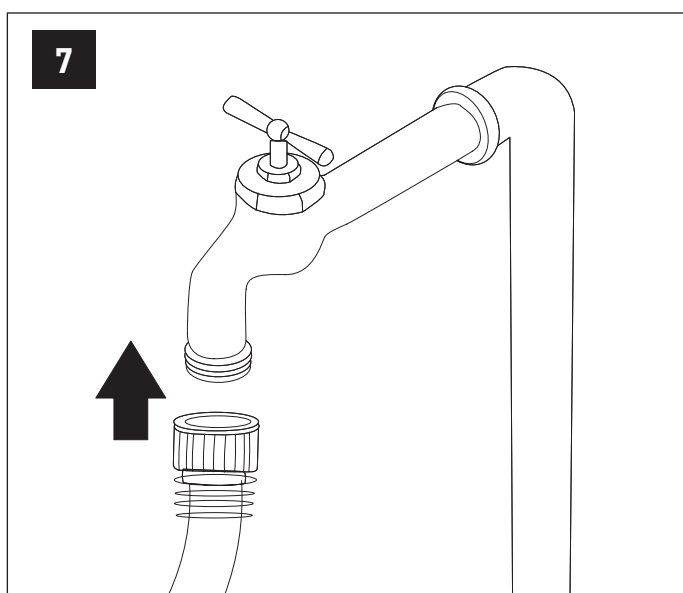
7. Assembly Instructions

3. To Connect to Tap Water

a) First, connect the power cleaner with the provided garden hose adaptor. Pull down the collar of the garden hose adaptor and fit it onto the siphon hose adaptor. Release the collar to lock the adaptor in place. Then connect the garden hose to the garden hose adaptor. Twist tightly to secure (Fig. 6).



b) Attach the other end of the garden hose to water supply (Fig. 7).



WARNING

Keep hose away from sharp objects. Bursting hoses may cause injury. Examine hoses regularly and replace if damaged. Do not attempt to mend a damaged hose.

WARNING

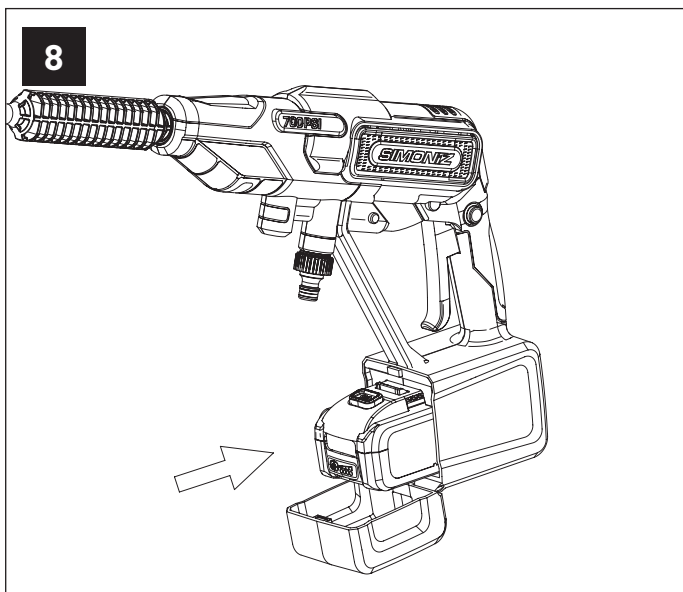
Water that has flowed through back flow preventers is considered to be non-potable.

Operation

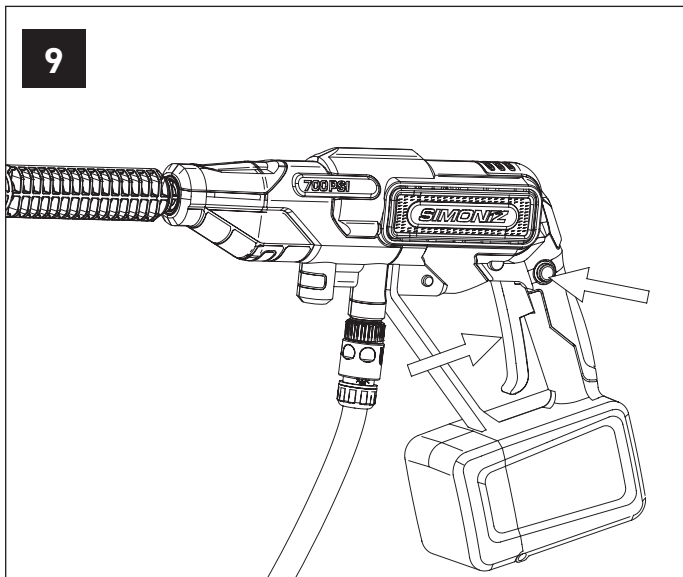
8. Operation

8.1 Starting the Cleaner

1. Make sure the power cleaner is connected with proper water source. Slide the battery in the battery compartment until it clicks to lock it into position. Close the battery compartment cover (Fig. 8).



2. If connected with tap water, turn the water supply tap on completely.
3. Push the safety lock on the spray gun handle, then with the safety lock pressed, engage the trigger for a few seconds until the water flow is steady (Fig. 9).



CAUTION

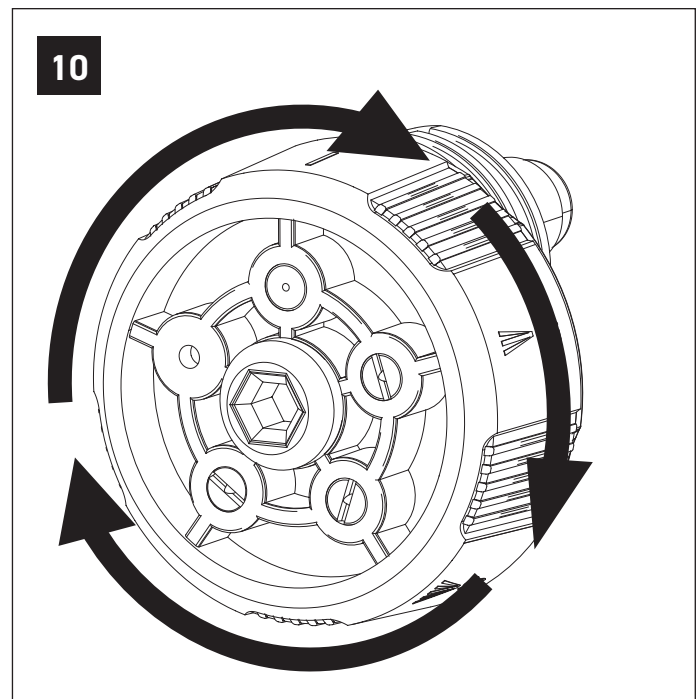
NEVER change spray pattern without stopping the power cleaner and removing the battery.

WARNING

High-pressure jets can be dangerous if subject to misuse. The jet must not be directed at persons, pets, live electrical equipment, or the appliance itself.

8.2 To Change the Spray Pattern

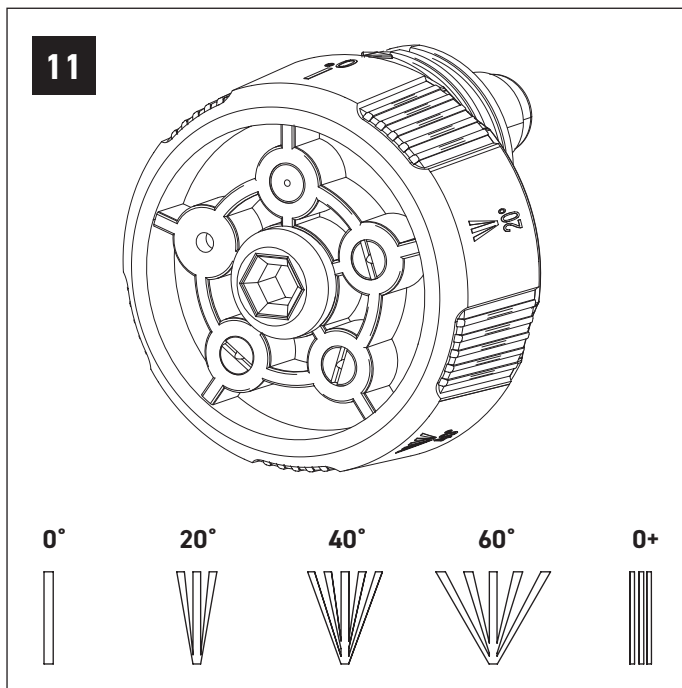
1. Turn off the power cleaner.
2. Screw the nozzle collar to align the symbol of the desired spray pattern with the mark on the nozzle (Fig. 10).



Rinsing with the Power Cleaner

9. Rinsing with the Power Cleaner

1. Release the On/Off trigger and remove the battery. Remove the siphon hose from the bucket/fresh water or shut off the tap.
 2. Remove the soap dispenser attachment by pushing firmly in while twisting it counter-clockwise to unlock the tabs and remove from the grooves. Pull the attachment out of the power cleaner.
 3. Attach the extension wand and the spray wand onto the power cleaner.
 4. Select the right spray pattern for the job (Fig. 11).
- Use the 40° fan-tip spray pattern to clean home siding, brick patios, wood decks, driveways, or sidewalks. When using this spray pattern, test a small area first to avoid surface damage.
 - Use the 60° wide-spray spray pattern to clean items such as cars, trucks, boats, patio furniture, or lawn equipment.
 - Use the 0+ spray pattern for some light cleaning and watering plants.
- Start at the top of the area to be rinsed and work your way down, making sure to overlap your strokes.



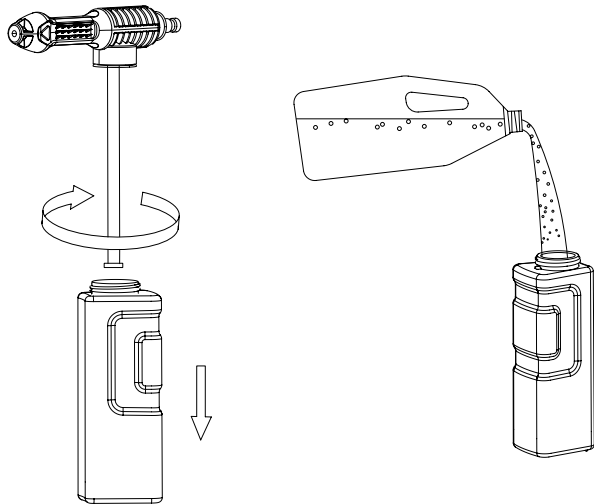
- The 0° intense-jet spray pattern is an extremely powerful nozzle that delivers a high-pressure, pencil-point jet stream. It is used to cut heavy dirt deposits in a small, concentrated area. It is ideal for dissolving stubborn substances, like tar and grease spots on concrete, or for removing caked mud from equipment. Use this pattern to clean hard-to-reach areas including the facades of 2-story buildings or the undersides of lawn mowers and tractors.
- Use the 20° fan-tip spray pattern to clean home siding, brick patios, wood decks, driveways, or sidewalks. When using this spray pattern, test a small area first to avoid surface damage.

Working with Foam Blaster

10. Working with Foam Blaster

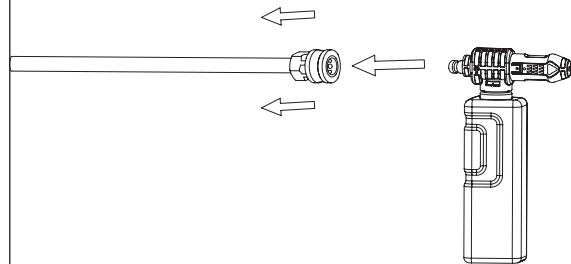
Working with a detergent ensures quick soaking of the dirt, and allows the high-pressure water to penetrate and remove the dirt more effectively. Always spray detergent on a dry surface, do not pre-soak the area. Wetting the surface first dilutes the detergent and reduces its cleaning ability.

12



1. Detach spray head by turning detergent bottle 1/4 counter-clockwise.
2. Fill the bottle with the detergent.
3. Attach the spray head on the bottle by turning 1/4 clockwise.

13



1. Attach the foam blaster onto the QC wand.
2. Apply the detergent to dry work surface from bottom to top.
3. Allow the detergent to remain on the surface for a short time before rinsing. **DO NOT** allow the detergent to dry on the surface.
4. After finish working with detergent, fill the clean water in the bottle and spray water for one minute in ON position.

CAUTION

Damage may occur to painted surfaces if chemical are allowed to dry on them. Wash and rinse a small section at a time.

Shutting Down / Storage / Maintenance / Technical Specifications

11. Shutting Down

1. Release the trigger. Remove the battery.
2. Remove the siphon hose out from the bucket/fresh water or turn off the water source.
3. Disconnect the siphon/garden hose connection on the power cleaner.

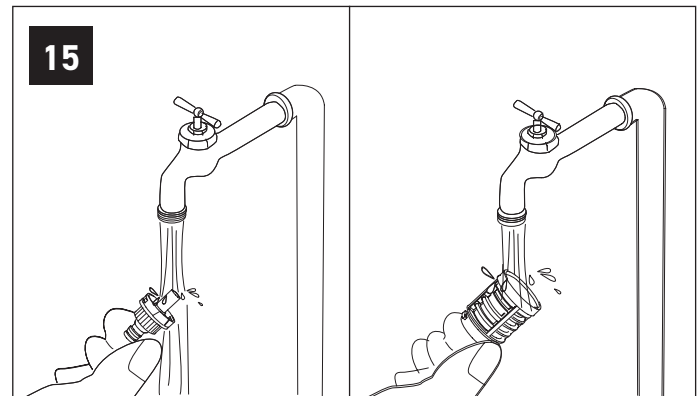
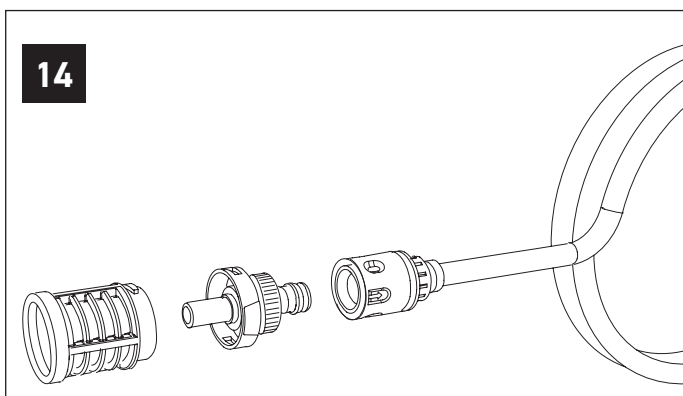
12. Storage

⚠ CAUTION

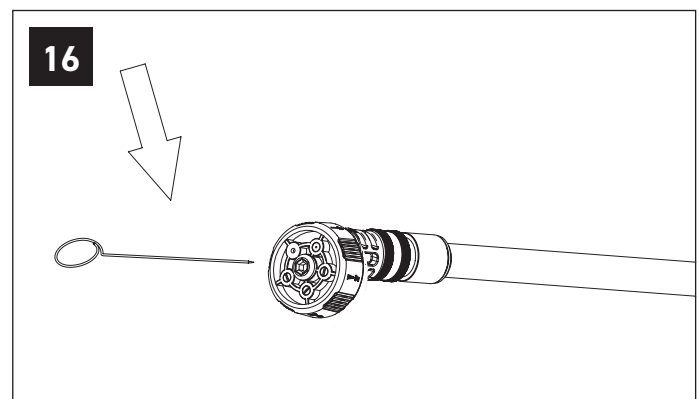
- Always store your power cleaner bundle in a location where the temperature will not fall below 32°F (0°C). The pump in this machine is susceptible to permanent damage if it freezes. **FREEZE DAMAGE IS NOT COVERED BY THE WARRANTY.**

13. Maintenance

1. To ensure good performance, check and clean the water inlet filter on the end of the siphon hose. Remove and disassemble the filter and rinse all components with warm water to prevent any foreign matter from clogging the pump (Figs. 14 – 16).



2. Clean the nozzle with the needle clean-out tool provided (Fig. 13). Remove the spray wand from the gun; remove any dirt from the nozzle hole and rinse.



14. Technical Specifications

Battery Voltage:	20 VDC
Charger Input:	120 V / 60 Hz
Maximum Pressure:	700 PSI
Rated Water Flow:	0.7US GPM (2.65 LPM)
Minimum Inlet Pressure:	30 PSI
Maximum Inlet Pressure:	100 PSI
Pump Type:	Medium duty maintenance-free cam
Motor Type:	Permanent magnet DC motor
Maximum Temperature of Pumped Water:	104°F (40°C)
Garden Hose Length:	20' (6 m)
Inlet Ports:	3/4" (11.5 TPI)

Warranty

15. Warranty

Always keep your receipt as proof of purchase.

We're here to help! If you have any questions or comments, call our toll-free hotline 1-866-474-6664. Have your serial number ready. The serial number can be found on the back plate, located on the side of the unit.

This product has a Parts Replacement, Product Exchange and/or Repair Warranty only. **NO REFUNDS** will be provided. Please see stores for Product Exchange details.

Two (2) Year Warranty — Motor

This product is guaranteed to be free from defects in material and workmanship for two years from the date of its original purchase. If such a defect appears during the warranty period, upon presentation of proof of purchase, Trileaf Distribution will repair or replace the product (at its discretion). Shipping charges may apply.

Ninety (90) Day Warranty — Accessories

Trigger gun, hose, spray wands and other accessories are guaranteed for ninety (90) days from the date of purchase. You may purchase accessories directly through place of purchase, or by calling our toll-free hotline 1-866-474-6664.

This warranty does not cover accidental damage, unreasonable use, normal wear and tear, use of improper detergents, freezing, neglect, or non-compliance with the Operating Instructions. The warranty does not cover loss of use or other consequential damages arising from any of the above, nor does it cover repairs made or attempted by unauthorized persons.

The warranty is void if the equipment is used for commercial, rental or industrial purposes.

If you have further questions, please visit our website (www.simoniz.ca) or call 1-866-474-6664.

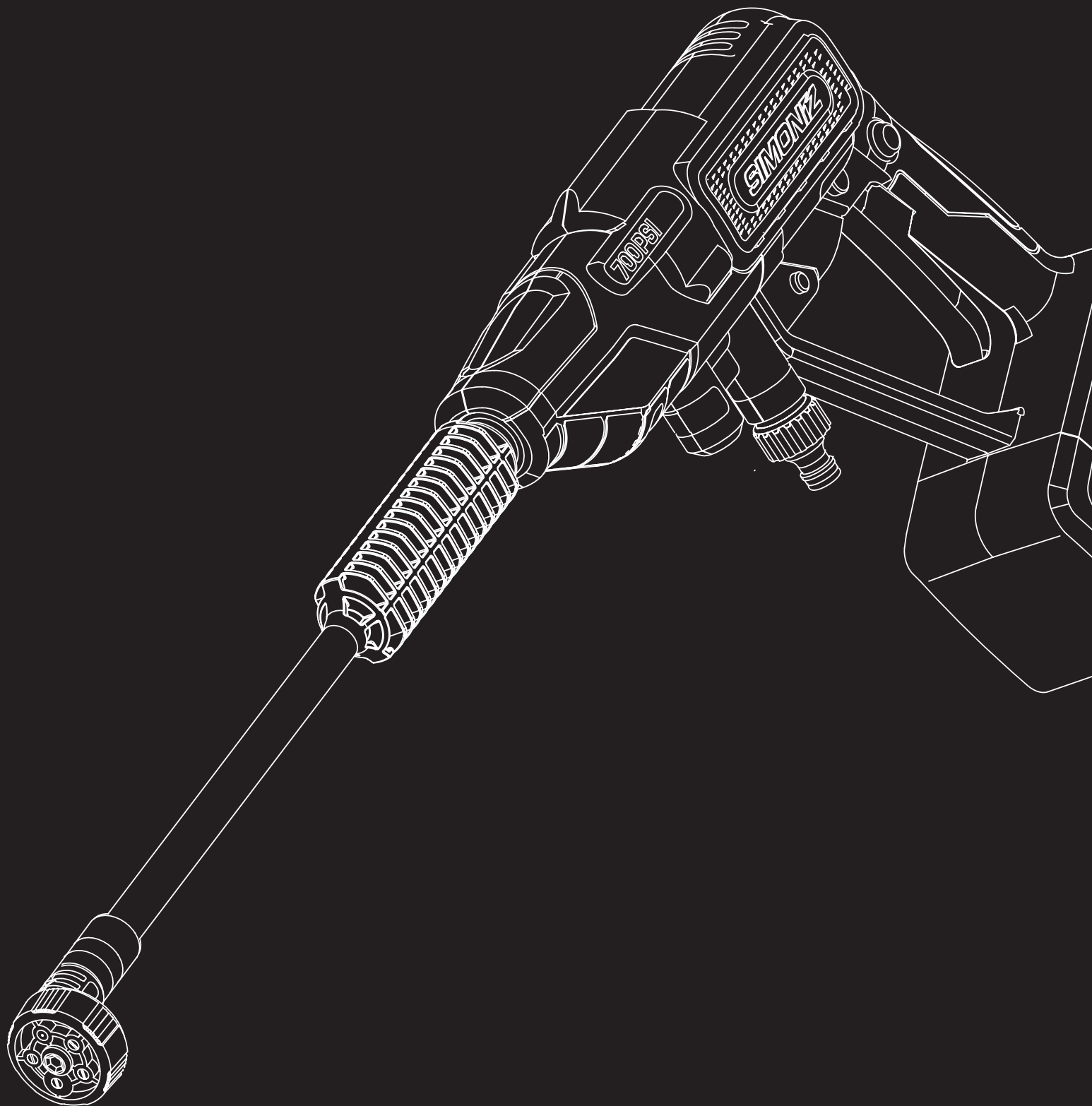
Made in China

**Imported by
Trileaf Distribution Trifeuil, Toronto, Canada M4S 2B8**

NOTE

NOTE

NOTE



SIMONIZ[®]

**700 PSI
CORDLESS PRESSURE WASHER**

MODEL: XE45 / 039-8126-4

Imported by
Trileaf Distribution Trifeuil, Toronto, Canada M4S 2B8