

REPLACING THE SPARK PLUG

For Simoniz S3200 Gas Pressure Washer (with Kohler engine)

Canadian Tire Product : 039-8056-0

Model Number: XG01

Tools required: Spark plug wrench (included), cleaning cloth, air compressor (optional) torque wrench (optional)

Part Number: [Click link to order: XG01-100-0004 spark plug](#), or see below contact details.

Difficulty Level (1-3): 1 (Easy)



WARNING: BEFORE YOU START

Accidental starts can cause serious injury or death. Before performing repair, make sure machine is OFF and disable engine by disconnecting spark plug wire. HOT PARTS CAN CAUSE SEVERE BURNS. DO NOT TOUCH ENGINE WHILE OPERATING, OR JUST AFTER STOPPING. Work on a LEVEL and FLAT surface.

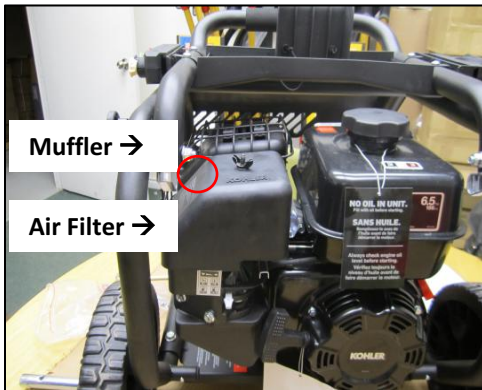


Figure 1:

STEP 1: Locate the spark plug between the muffler and the air filter. See Figure 1.

STEP 2: Clean area around the spark plug by gently wiping with a cloth, or blow out debris with an air compressor, to avoid debris from falling into the engine.



Figure 2:

STEP 3: Firmly grab the metal boot of the wire. DO NOT pull on the wire itself as it could cause damage. See Figure 2.

See next page for more steps 

REPLACING THE SPARK PLUG (continued)

For Simoniz S3200 Gas Pressure Washer (with Kohler engine)

Canadian Tire Product : 039-8056-0

Model Number: XG01

Tools required: Spark plug wrench (included), cleaning cloth, air compressor (optional) torque wrench (optional)

Part Number: Click link to order: [XG01-100-0004 spark plug](#), or see below contact details.

Difficulty Level (1-3): 1 (Easy)



Figure 3: Spark Plug Wrench

STEP 4: Use the spark plug wrench (included) to remove the spark plug by turning COUNTER-CLOCKWISE. See Figure 3.

STEP 5: Insert new spark plug by hand into socket. See Figure 4 and 5.

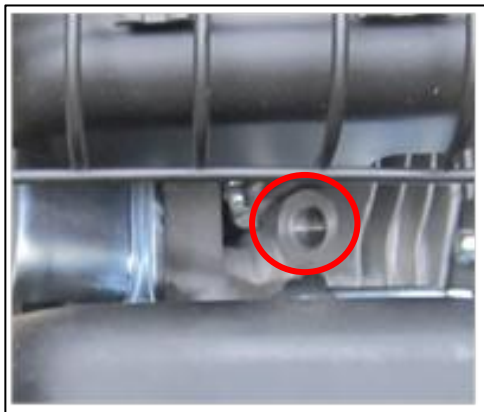


Figure 4: Spark plug socket

STEP 6: Manually thread the spark plug into the engine by turning clockwise at least 2 FULL TURNS. See figure 5.

STEP 7: Use the spark plug wrench and continue tightening turning CLOCKWISE until it stops. Do not over-tighten. If using a torque wrench, torque between 12 to 15 lbs. See Figure 3.

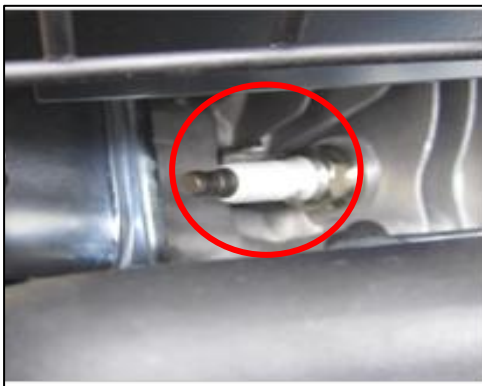


Figure 5: Manually insert and thread new spark plug. Use spark plug wrench to tighten.